



# OOPPERA BALETTI

Suomen kansallisooppera ja -baletti  
Finlands nationalopera och -balett  
Finnish National Opera and Ballet

A stage performance featuring three identical scenes. Each scene shows a male dancer in a dark, low-crouched pose supporting a female dancer who is sitting on a large, golden, barrel-like object. The female dancer has one arm raised. The background is a gradient from blue at the top to orange at the bottom. Large, black, stylized arches with a grid-like pattern are positioned behind the dancers. The text "OPERA EUROPA Safety on Stage" is centered in white.

**OPERA EUROPA**  
**Safety on Stage**



# Erkki Wrangén

41 years

Mechanical engineer

Working at FNOB 3 years

Work experience

- industry

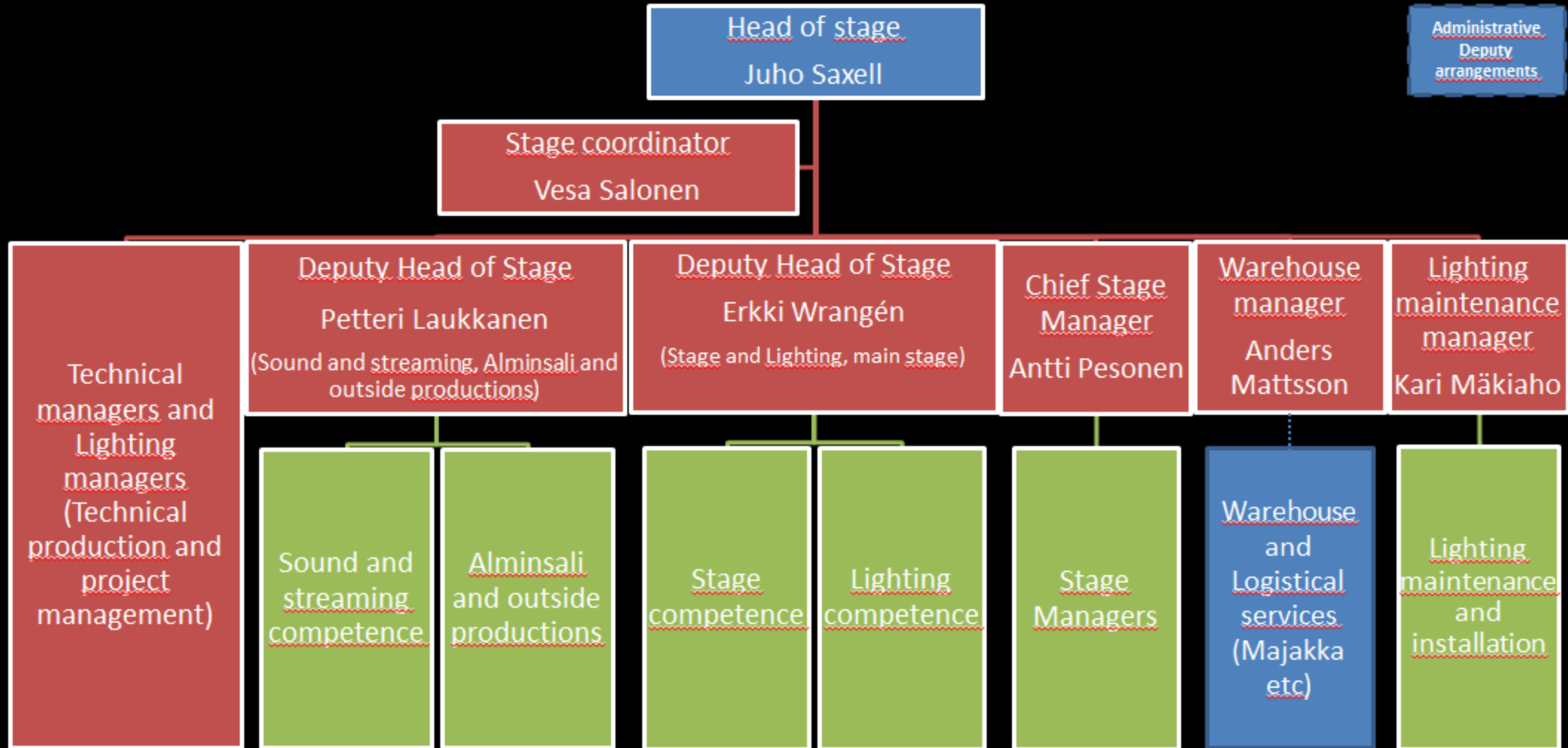
Key account manager

Project manager

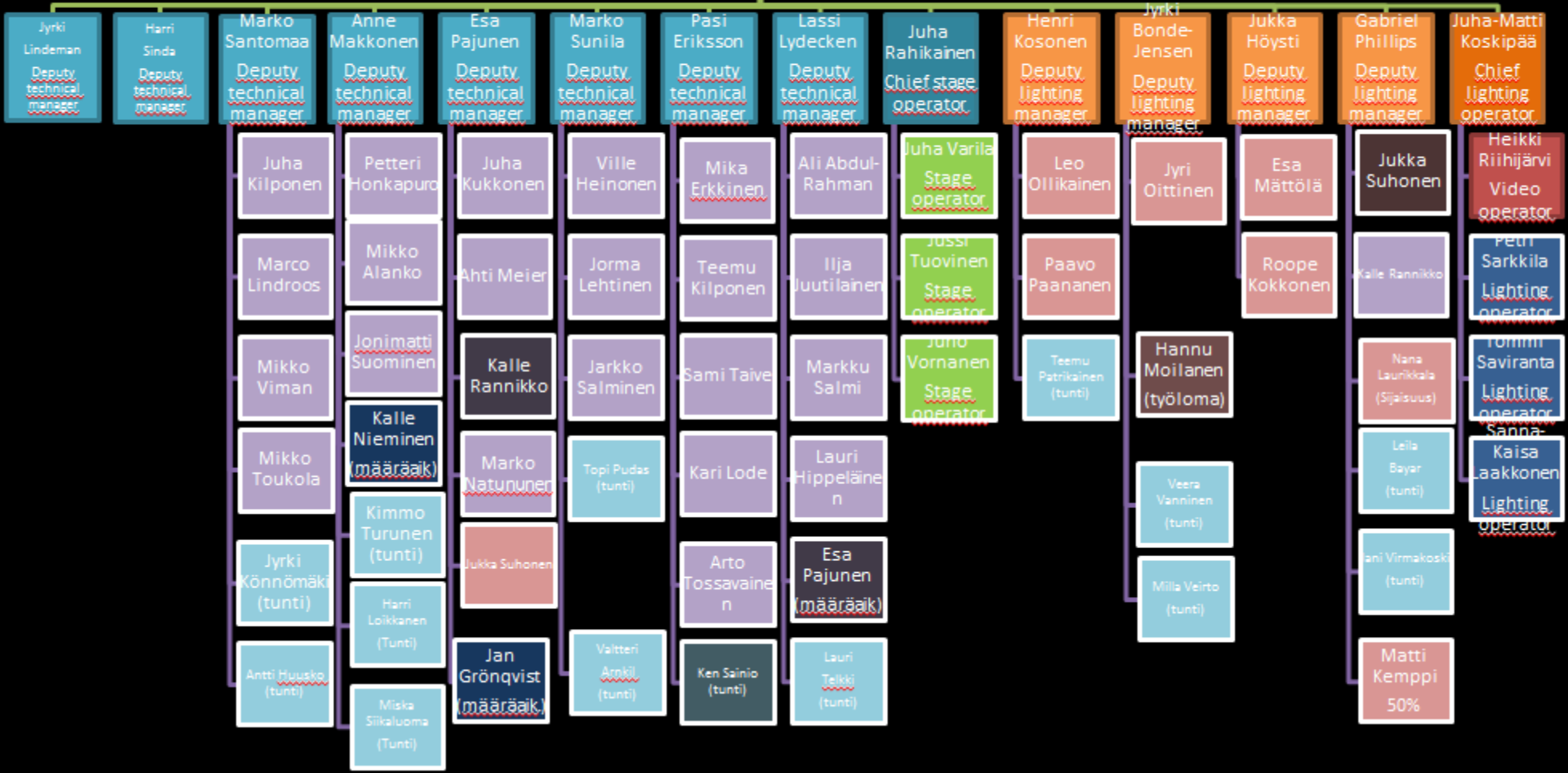
Manufacturing manager



# Stage tech organization



Erkki Wrangén  
Deputy Head of Stage  
(Lighting and Stage, main stage)



# **SAFETY ON STAGE**

## **WORKING ON STAGE NOW**

- HELMETS**
- PROTECTIVE GLASSES**
- PROTECTIVE SHOES**
- SAFETY RISK ANALYSIS ON STAGE**

## **TRAVELING ON STAGE**

- ONLY REQUIRED PERSONNEL IS AUTHORIZED ON STAGE**



**How we did it?**



# Helmets why?

1. Head should be protected during work on forklift basket up high. OK.
  2. What about crew under the basket?
  3. If crew under the basket is protected what about other people on stage?
  4. What other people? Well, there is....next slide.
- 
1. Reported 21 pcs of near by or accidents on head area in one year





# Only required personnel is authorized on stage

## SET UP

- safety gear on
- personnel who work on this face

## REHEARSAL

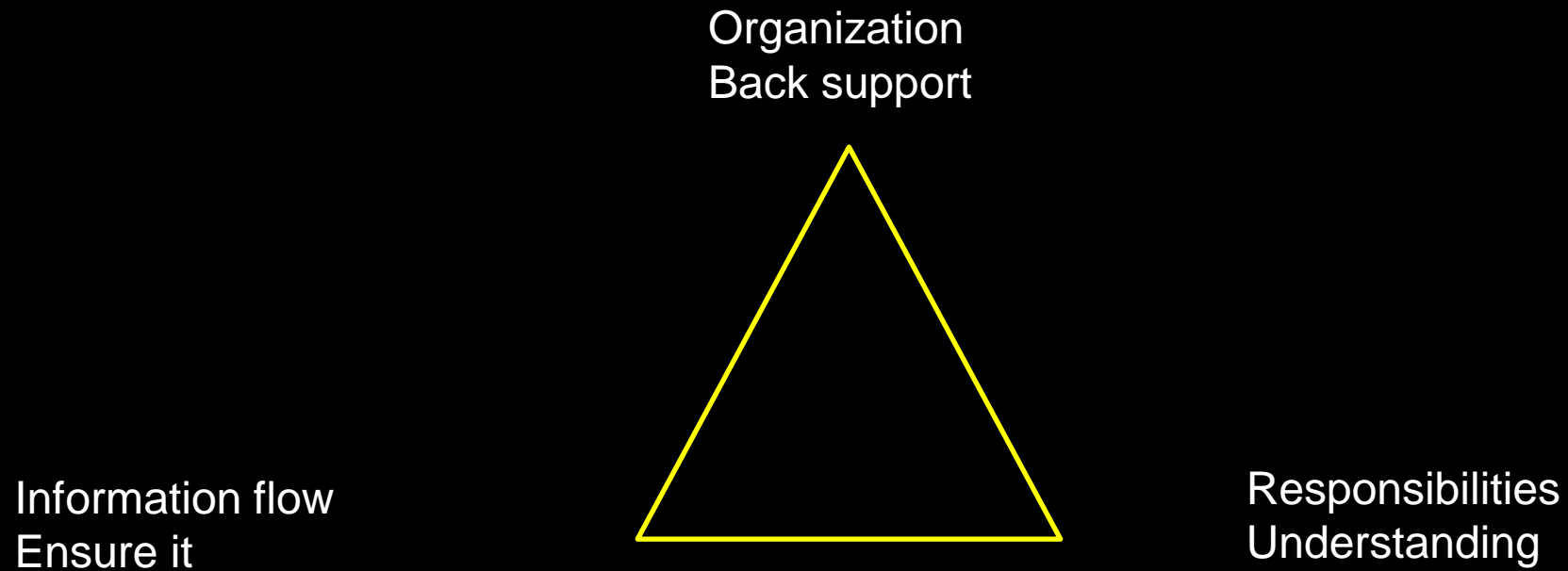
- personnel who work on this face

## PERFORMANCE

- personnel who work on this face



# Culture change - holy triangle



**THANK YOU**

